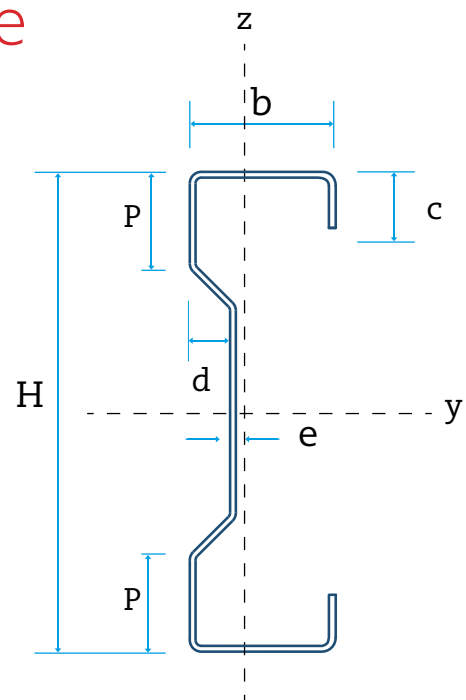




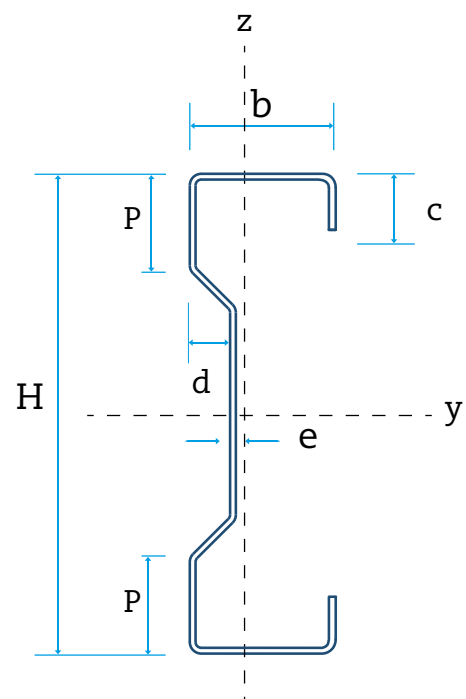
SIGMABRAU Profile

Manufacturing possibilities
H: 200 mm - 450 mm
e: 1,5 a 4 mm
b estándar: 50 a 80 mm
b especial: 60 / 70 / 75 / 85 mm
P: de 25 a 50 mm



SIGMA Profile

Manufacturing possibilities
H: 140 mm - 450 mm
e: 1,5 a 4 mm
b: de 50 a 85 mm
d: 21 / 26,5 / 29 mm
P: 25 to 50 mm depending on H



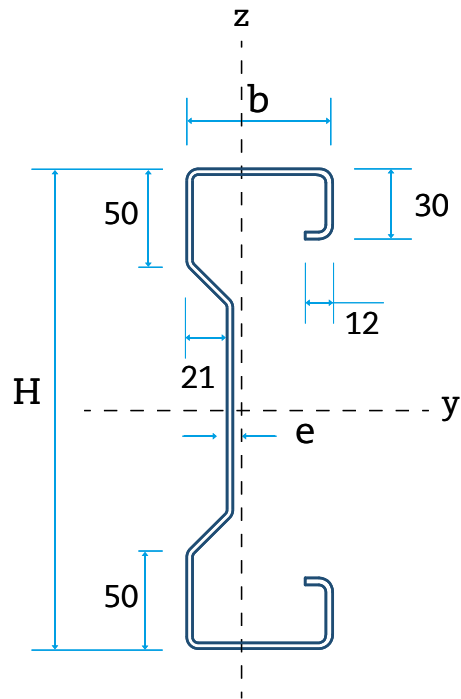
Sigmabrau PLUS

Manufacturing possibilities

H: 200 mm - 350 mm

e: 1,5 / 2 / 2,5 / 3 mm

b: 75 / 80 / 85 / 90 / 100 mm



Sigmabrau SEMIPLUS

Manufacturing possibilities

H: 200 mm - 450 mm

e: 1,5 / 2 / 2,5 / 3 / 3,5 / 4 mm

b: 75 / 80 / 85 / 90 / 100*

* (b: 90/100 for $200 \leq H \leq 350$ mm and ≤ 3 mm thickness)

d: 21 / 26,5 / 29

P: 25 to 50 mm

