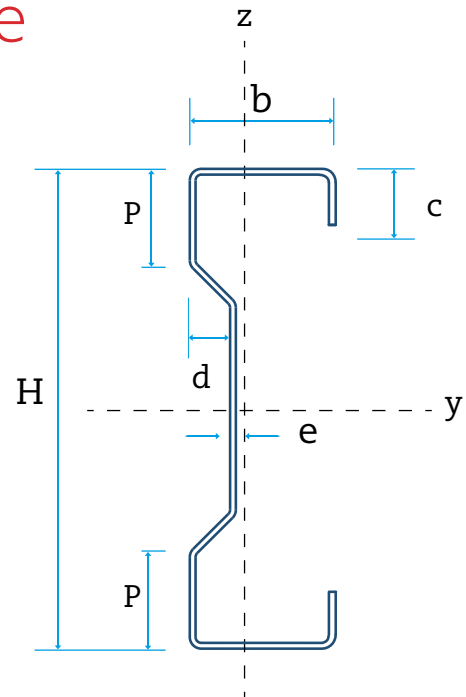




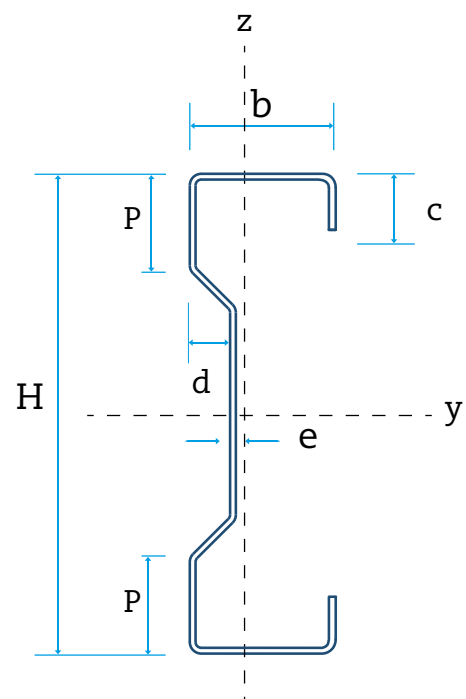
## SIGMABRAU Profile

**Manufacturing possibilities**  
H: 200 mm - 450 mm  
e: 1,5 a 4 mm  
**b estándar:** 50 a 80 mm  
**b especial:** 60 / 70 / 75 / 85 mm  
P: de 25 a 50 mm



## SIGMA Profile

**Manufacturing possibilities**  
H: 140 mm - 450 mm  
e: 1,5 a 4 mm  
**b:** de 50 a 85 mm  
**d:** 21 / 26,5 / 29 mm  
P: 25 to 50 mm depending on H



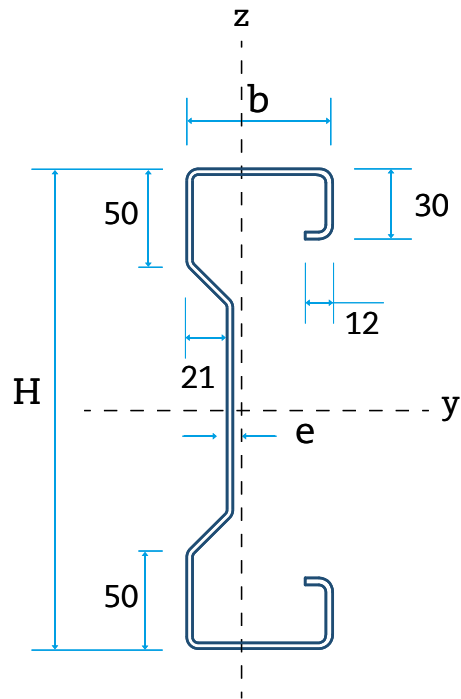
## Sigmabrau PLUS

### Manufacturing possibilities

H: 200 mm - 350 mm

e: 1,5 / 2 / 2,5 / 3 mm

b: 75 / 80 / 85 / 90 / 100 mm



## Sigmabrau SEMIPLUS

### Manufacturing possibilities

H: 200 mm - 450 mm

e: 1,5 / 2 / 2,5 / 3 / 3,5 / 4 mm

b: 75 / 80 / 85 / 90 / 100\*

\* (b: 90/100 for  $200 \leq H \leq 350$  mm and  $\leq 3$  mm thickness)

d: 21 / 26,5 / 29

P: 25 to 50 mm

